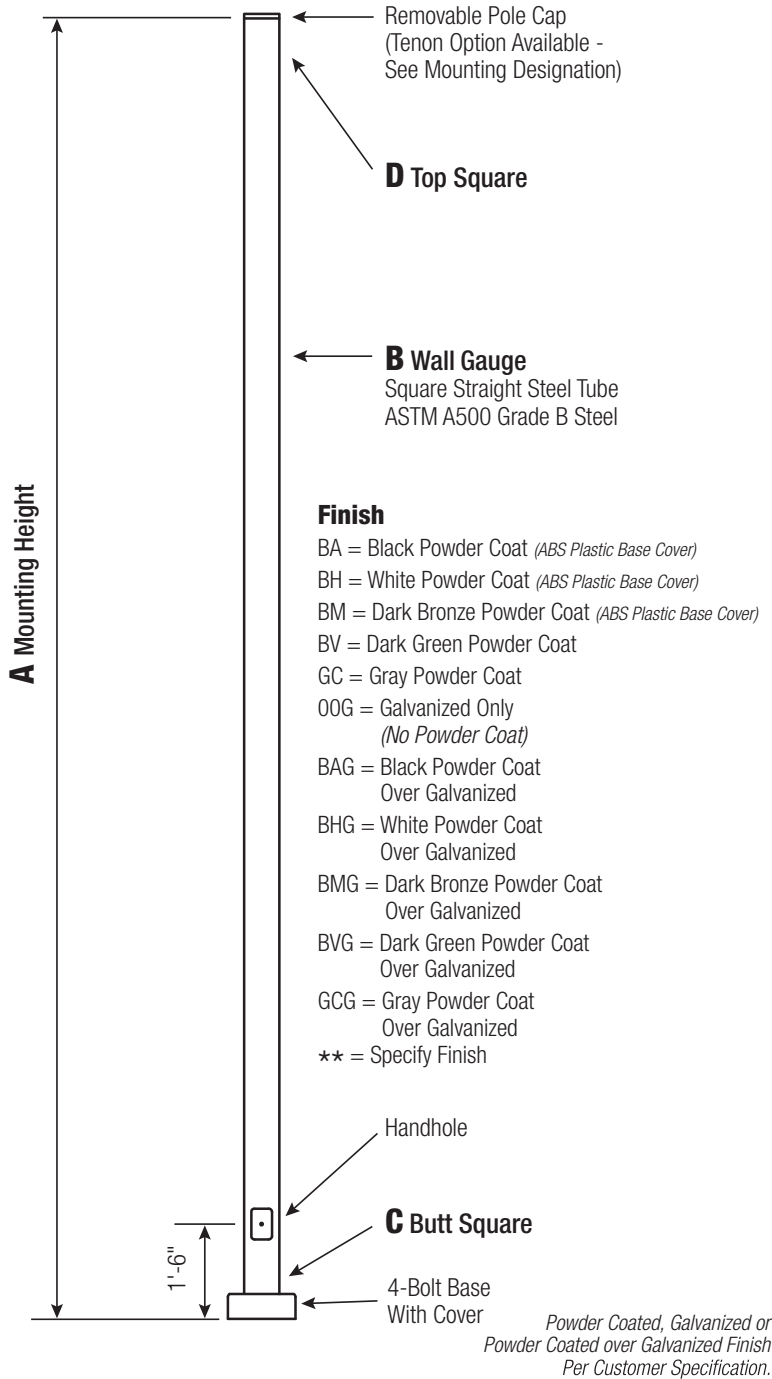


## 20 ft Square Steel Camera Pole



# CP20SS04

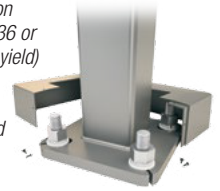
FINISH

### Pole

Pole shaft shall be weldable-grade, cold-rolled, 11 gauge commercial quality carbon steel tubing conforming to ASTM A500 Grade B. All welds shall conform to AWS D1.2 using ER70S-6 electrodes.

### Base Style

4-Bolt Steel Plate Base Flange of fabricated hot rolled carbon steel conforming to ASTM A36 or equivalent (36 ksi minimum yield) with 2-piece Base Cover and attaching hardware. Base Cover will be fabricated from ABS plastic or metal materials.

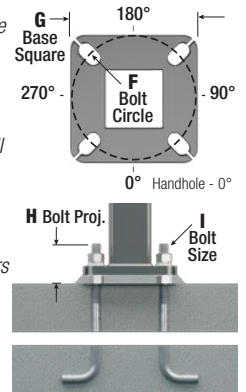


### Handhole

Reinforced, 3" x 5" Handhole with Cover, Stainless Steel Screw and Backbar. A Grounding Provision incorporating a tapped 1/2"-13NC hole will be welded to the handhole frame.

### Anchorage

Anchorage Kit will include four (4) L-shaped Steel Anchor Bolts conforming to AASHTO M314-90 Grade 55. Ten inches (10") of threaded end will be galvanized per ASTM A153. Kits will contain eight (8) Hex Nuts, four (4) Lock Washers, and eight (8) Flat Washers (all components Galvanized Steel). A bolt circle template will be provided.



### Vibration Damper

If determined necessary by Camera Poles, a top-mount, field installed First Mode Vibration Damper will be provided. Customer specification of the damper is available.

### EPA Notes

Effective Projected Area (EPA) in square feet. EPA's calculated using wind velocity (mph) indicated in accordance with 2009 AASHTO LTS-5 using a 25 year design life. Maximum EPA is based on the total weight shown. Increased total weight may reduce the maximum EPA. If weight is exceeded, or if other design life or code is required, please consult us.



800 E. Northwest Highway  
Suite 700  
Palatine, IL 60074  
(888) 364-8802  
www.camerapoles.org

A Mtg. Hgt.	B Wall Gauge	C Butt Square	TOTAL WEIGHT	90	100	MAXIMUM EPA				CATALOG NUMBER
						110	120	130	140	
20	11	4	85	10.0	7.2	6.4	4.7	3.3	2.2	CP20SS04

C Butt Sq.	D Top Sq.	F BOLT CIR. DIA.	G BASE SQ.	H BOLT PROJ.	I BOLT SIZE
4	4	8 - 9	8	3.75	.75 x 17 x 3

Dimensions in Inches