

Round Tapered Steel Poles

Weldable-grade carbon steel tubing

Reinforced handhole + grounding provision

Anchor bolts per AASHTO M314-90 Grade 55

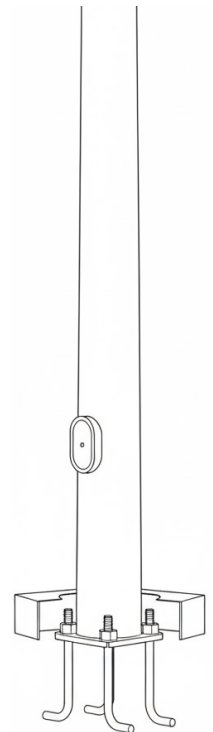
Finish: Powder coat, galvanized, or PC over galv.

Pole Dimensions & Base Hardware (Selected)

Pole No.	Height (ft)	Gauge	Butt Dia (in)	Top Dia (in)	Bolt Circle (in)	Base Sq (in)	Bolt Size
CPRTS101145	10	11	4.5	3.1	7.5-8.5	8	.75 x 17 x 3
CPRTS201161	20	11	6.1	3.3	9.5-10.5	10	.75 x 30 x 3
CPRTS251168	25	11	6.8	3.3	10-11	10	.75 x 30 x 3
CPRTS301168	30	11	6.8	2.6	10-11	10	.75 x 30 x 3
CPRTS301185	30	11	8.5	4.3	11.5-12.5	12	1 x 36 x 4
CPRTS351175	35	11	7.5	2.6	10.5-11.5	10.5	1 x 36 x 4
CPRTS351190	35	11	9.0	4.1	12-13	12.375	1 x 36 x 4
CPRTS390790	39	07	9.0	3.5	13-14	12.75	1.25 x 48 x 6
CPRTS450711	45	07	11.0	4.9	15-16	14	1.25 x 48 x 6

EPA Table (MPH - sq ft)

Pole No.	Max Wt (lb)	90	100	110	120	130	140
CPRTS101145	370	31.5	25.2	23.5	19.5	16.4	14.0
CPRTS201161	340	25.9	20.4	18.8	15.4	12.8	10.8
CPRTS251168	325	19.4	15.0	13.8	11.1	9.1	7.5
CPRTS301168	275	14.6	11.1	10.1	7.9	6.2	5.0
CPRTS301185	375	31.3	24.7	22.9	18.8	15.8	13.4
CPRTS351175	265	17.0	13.1	11.9	9.4	7.5	6.0
CPRTS351190	345	26.9	21.0	19.4	15.8	13.1	11.1
CPRTS390790	425	36.6	28.8	26.7	21.9	18.2	15.4
CPRTS450711	510	41.1	32.5	30.3	24.9	20.8	17.5





Material: ASTM A595 Grade A steel

Welding: AWS D1.1 (ER70S-6)

Base: 4-bolt steel base plate

Round Tapered Steel Poles

POLE

Pole shaft shall be weldable-grade, hot-rolled, commercial quality carbon steel tubing conforming to ASTM A595 Grade A. Options include 11 gauge and 7 gauge. All welds shall conform to AWS D1.1 using ER70S-6 electrodes.

BASE STYLE

4-bolt steel base plate of fabricated hot rolled carbon steel conforming to ASTM A36 or equivalent (36 ksi minimum yield) with 2-piece base cover and attaching hardware. Base cover fabricated from metal materials.

ANCHORAGE

Anchorage kit includes four (4) L-shaped steel anchor bolts conforming to AASHTO M314-90 Grade 55. Ten inches (10") of threaded end will be galvanized per ASTM A153. Kits contain eight (8) hex nuts, four (4) lock washers, and eight (8) flat washers (galvanized steel). A paper bolt circle template is provided.

HANDHOLE

- Up to 5.9" butt diameters: reinforced 3" x 5" handhole with cover, stainless steel screw and backbar. Grounding provision includes tapped 1/2"-13NC hole.
- 6"+ butt diameters: reinforced 4" x 6-1/2" handhole with cover, stainless steel screw and backbar. Grounding provision includes tapped 1/2"-13NC hole.

VIBRATION DAMPER

If determined necessary by the manufacturer, or if specified by the customer, a first and/or second mode vibration damper will be provided.

EPA NOTES

Effective Projected Area (EPA) in square feet. EPA values are calculated using the wind velocity (mph) indicated in accordance with 2009 AASHTO LTS-5 using a 25-year design life. Maximum EPA is based on the luminaire weight shown. Increased luminaire weight may reduce maximum EPA. If weight is exceeded, or if another design life or code is required, consult the factory.

Finish: Powder Coated, Galvanized, or Powder Coated over Galvanized per customer specification.

Warning: Do not install pole without equipment.

