



**Material:** ASTM A500 Grade B steel

**Welding:** AWS D1.1 (ER70S-6)

**Base:** 4-bolt steel base plate

# Square Straight Steel Poles

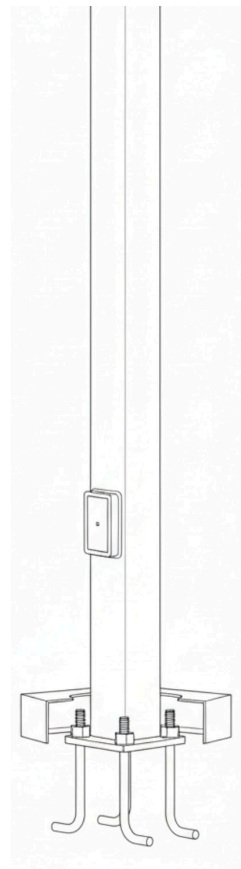
Reinforced handhole + grounding provision

Anchor bolts per AASHTO M314-90 Grade 55

Finish: Powder coat, galvanized, or PC over galv.

## POLE DIMENSIONS & BASE HARDWARE (SELECTED MODELS)

Pole No.	Height (ft)	Gauge	Butt Sq (in)	Top Sq (in)	Bolt Circle (in)	Base Sq (in)	Bolt Size
CP10SS0411	10	11	4	4	8-9	8	0.75 x 17 x 3
CP12SS0411	12	11	4	4	8-9	8	0.75 x 17 x 3
CP14SS0411	14	11	4	4	8-9	8	0.75 x 17 x 3
CP15SS0411	15	11	4	4	8-9	8	0.75 x 17 x 3
CP16SS0411	16	11	4	4	8-9	8	0.75 x 17 x 3
CP16SS0407	16	07	4	4	8-9	8	0.75 x 30 x 3
CP18SS0407	18	07	4	4	8-9	8	0.75 x 30 x 3
CP20SS0407	20	07	4	4	8-9	8	0.75 x 30 x 3
CP20SS0507	20	07	5	5	10-12	11	1 x 36 x 4
CP22SS0507	22	07	5	5	10-12	11	1 x 36 x 4
CP25SS0507	25	07	5	5	10-12	11	1 x 36 x 4
CP28SS0507	28	07	5	5	10-12	11	1 x 36 x 4
CP30SS0507	30	07	5	5	10-12	11	1 x 36 x 4
CP30SS0607	30	07	6	6	11-13	12.5	1 x 36 x 4





**Material:** ASTM A500 Grade B steel

**Welding:** AWS D1.1 (ER70S-6)

**Base:** 4-bolt steel base plate

# Square Straight Steel Poles

## POLE DIMENSIONS & BASE HARDWARE (SELECTED)

Butt / Top Sq (in)	Bolt Circle (in)	Base Sq (in)	Bolt Proj (in)	Bolt Size	Notes
4 / 4 (11 ga)	8-9	8	3.75	0.75 x 17 x 3	
4 / 4 (7 ga)	8-9	8	3.75	0.75 x 30 x 3	
5 / 5 (11 ga)	10-12	11	3.75	0.75 x 30 x 3	Requires oversized washers (provided)
5 / 5 (7 ga)	10-12	11	4.875	1 x 36 x 4	
6 / 6 (7 ga)	11-13	12.5	4.875	1 x 36 x 4	

## EPA TABLE (MPH — SQ FT)

Pole No.	Max Wt (lb)	90	100	110	120	130	140
CP10SS0411	320	25.2	20.0	18.6	15.3	12.7	10.6
CP12SS0411	285	20.6	16.2	14.9	12.1	9.9	8.2
CP14SS0411	255	17.0	13.2	12.1	9.7	7.8	6.3
CP15SS0411	245	15.5	11.9	10.9	8.6	6.8	5.4
CP16SS0411	235	14.0	10.7	9.7	7.6	5.9	4.6
CP16SS0407	290	21.5	16.8	15.5	12.5	10.2	8.4
CP18SS0407	265	18.0	13.9	12.8	10.2	8.2	6.6
CP20SS0407	240	15.1	11.5	10.5	8.2	6.5	5.0
CP20SS0507	330	26.3	20.3	18.6	14.8	11.9	9.6
CP22SS0507	300	22.4	17.1	15.6	12.2	9.6	7.5
CP25SS0507	260	17.7	13.2	11.9	9.0	6.7	4.9
CP28SS0507	235	13.9	9.9	8.8	6.3	4.3	2.7
CP30SS0507	215	11.7	8.0	7.0	4.7	2.9	1.5
CP30SS0607	275	19.2	13.7	12.2	8.7	5.9	3.8

## EPA NOTES

Effective Projected Area (EPA) in square feet. EPA values are calculated using wind velocity (mph) indicated in accordance with 2009 AASHTO LTS-5 using a 25-year design life. Maximum EPA is based on the luminaire weight shown. Increased luminaire weight may reduce maximum EPA. If weight is exceeded, or if another design life or code is required, consult the factory.

**Finish:** Powder Coated, Galvanized, or Powder Coated over Galvanized per customer specification.

**Warning:** Do not install pole without equipment.





**Material:** ASTM A500 Grade B steel

**Welding:** AWS D1.1 (ER70S-6)

**Base:** 4-bolt steel base plate

# Square Straight Steel Poles

## POLE

Pole shaft shall be weldable-grade, cold-rolled, commercial quality carbon steel tubing conforming to **ASTM A500 Grade B**. Options include **11 gauge** and **7 gauge**. All welds shall conform to **AWS D1.1** using **ER70S-6** electrodes.

## BASE STYLE

4-bolt steel plate base flange of fabricated hot rolled carbon steel conforming to **ASTM A36** or equivalent (36 ksi minimum yield) with 2-piece base cover and attaching hardware.

## ANCHORAGE

Anchorage kit includes four (4) L-shaped steel anchor bolts conforming to **AASHTO M314-90 Grade 55**. Ten inches (10") of threaded end will be galvanized per **ASTM A153**. Kits contain eight (8) hex nuts, four (4) lock washers, and eight (8) flat washers (galvanized steel). A paper bolt circle template is provided.

## HANDHOLE

Reinforced 3" x 5" handhole with cover, stainless steel screw and backbar. Grounding provision incorporates a tapped 1/2"-13NC hole.

## VIBRATION DAMPER

If determined necessary by the manufacturer, or if specified by the customer, a first and/or second mode vibration damper will be provided.

## CATALOG / POLE NUMBERING

CP format: CPXXSSYYZZ where XX = height (ft, 2 digits), YY = butt square (in, 2 digits), ZZ = wall gauge (07 or 11).

Example: CP20SS0407 = 20 ft, SSS, 4" butt square, 7 gauge.

